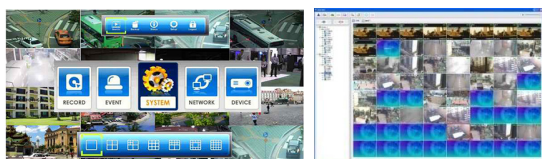


# NUBIX16XQL

## PROFESSIONAL REAL TIME 16 CHANNEL STANDALONE DVR



### CMS PROGRAM



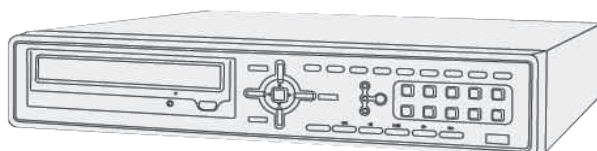
### KEY FEATURES

- 16 CHANNEL 960H H.264 DVR
- CMS PROGRAM
- REAL HD RESOLUTION SUPPORT (HDMI PORT)
- 2 HDDs x 4TB (1 HDD + DVD-RW)
- 2 SPOT MONITOR OUTPUT
- VERSATILE PLAYBACK FUNCTIONS
- GIGABIT LAN
- WINDOWS AND MAC PC COMPATIBLE WEB VIEWER
- SMARTPHONE VIEWER (IPHONE, IPAD, ANDROID)
- 480 FPS REAL TIME 960H (960 X 480) RECORDING & PLAYBACK
- DUAL MODE OPERATION / SMART SEARCH / SECTION REPEAT PLAYBACK

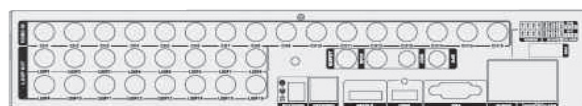
### SPECIFICATIONS

<b>* GENERAL</b>	
Performance	Pentaplex
Display speed	Real time
Record speed	NTSC: 240fps @ 960H / PAL: 200fps @ 960H
Video In /Analog Camera	16 (BNC)
Video Out /display	1 HDMI, 1 VGA
Video Out /resolution	1920x1080, 1600x1200, 1440x900, 1280x1024, 1280x720, 1024x968
Video Out /Spot (CVBS)	2 BNC
Audio/ Input / Output	16 / 1
Sensor Alarm Input / Output	4 / 1
<b>* DETAILS</b>	
Screen/ Display split	1, 4, 7, 9, 10, 13, 16
Screen /interface	Graphic User Interface
Video/Codec	H.264
Video/Image quality	Highest / High / Normal / Low
Video/Recording type	Schedule / Normal / Event (Motion, Sensor, Videoloss)
Storage/Internal	2 HDDs x 4TB (1 HDD + DVD-RW)
Storage/Option	Add SATA Board: 3 HDDs or 2 HDDs + DVD-RW
Connectors/ USB / RS-485	2 USB ports / PTZ camera, PTZ controller interface
<b>* FUNCTIONS</b>	
Camera option	Color adjustment/Position change / Freeze / 4X digital zoom (live/playback)
Motion/Sensitivity	5 levels motion detection
Motion/Area	Adjustable GRID (22 x 15)
System/Hidden Camera	Hidden camera on live monitoring
System/PTZ	Various PTZ camera protocol / Preset up to 255 / RS-485
System/Private Zone	Blocking the private zone (live / playback)
System/Auto Time Sync	NTP (Network Time Protocol)
System/Firmware Update	USB
System/S.M.A.R.T.	Auto detect when HDD's problem
Event/Type	Motion / Sensor / Video loss
Event/Action	Recording, E-Mail, Log, Send message to remote, Buzzer, Pop up, Alarm, PTZ preset
Event/Pre/Post Recording	Up to 60sec / 100sec
Backup/ File format	DVR format
Backup/ Media	DVD / USB device / Network
Network/Type	Static IP / DHCP / DDNS
Network/Base-T	10/100/1000 Mbps
Network/Browser	CMS, Web viewer (Windows/MAC OS), Smart phone support (iPhone, iPad, Android)

### FRONT VIEW



### REAR VIEW



### HDMI VIDEO

HDMI is the de facto standard digital interface for HD and the consumer electronics market. HDMI (High-Definition Multimedia Interface) is the first and only industry-supported, uncompressed, all digital audio/video interface. By delivering crystal-clear, all-digital audio and video via a single cable, HDMI dramatically simplifies cabling and helps provide consumers with the highest quality home theater experience. HDMI provides a interface between any audio/ video source, such as a set-top box, DVD player, or A/V receiver and an audio and/or video monitor, such as a digital television (DTV) over a single cable.

<b>* SEARCH /PLAYBACK</b>	
Speed	5 steps
Quick / Event search	Real time
Record speed	Search by designated time / Search by event
Section repeat playback	Playback repeating designated time section only
Panorama search	Searching each frame in a screen simultaneously
SMART search	SMART search
Dual mode function	Live monitoring during playback
<b>* POWER</b>	
Operating Temperature	0~45°C, 32~113°F
Humidity	5~85%
Power requirement	DC 12V 5A
<b>* PHYSICAL (WITHOUT HDD)</b>	
Dimensions (W x H x D)	360(W) x 390(D) x 70(H) (mm) 14.17(W) x 15.35(D) x 2.7(H) (inches)
Weight	3.5 (kg) 7.7 (pounds)