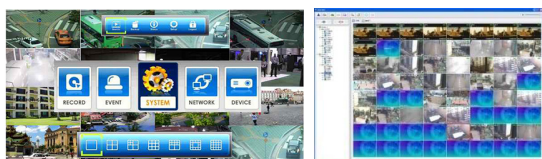


# COR-BIX16XQL

## PROFESSIONAL REAL TIME 16 CHANNEL STANDALONE DVR



### CMS PROGRAM



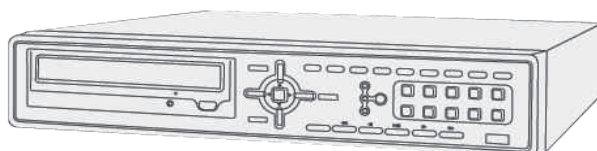
### KEY FEATURES

- 16 CHANNEL 960H H.264 DVR
- CMS PROGRAM
- REAL HD RESOLUTION SUPPORT (HDMI PORT)
- 2 HDDs x 4TB (1 HDD + DVD-RW)
- 2 SPOT MONITOR OUTPUT
- VERSATILE PLAYBACK FUNCTIONS
- GIGABIT LAN
- WINDOWS AND MAC PC COMPATIBLE WEB VIEWER
- SMARTPHONE VIEWER (IPHONE, IPAD, ANDROID)
- 480 FPS REAL TIME 960H (960 X 480) RECORDING & PLAYBACK
- DUAL MODE OPERATION / SMART SEARCH / SECTION REPEAT PLAYBACK

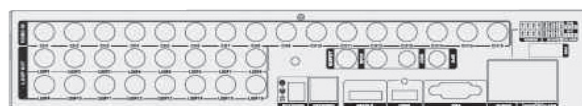
### SPECIFICATIONS

|                             |   |
|-----------------------------|---|
| <b>* GENERAL</b>            |   |
| Performance                 | Pentaplex   |
| Display speed               | Real time   |
| Record speed                | NTSC: 240fps @ 960H / PAL: 200fps @ 960H  |
| Video In /Analog Camera     | 16 (BNC)  |
| Video Out /display          | 1 HDMI, 1 VGA   |
| Video Out /resolution       | 1920x1080, 1600x1200, 1440x900, 1280x1024, 1280x720, 1024x968                     |
| Video Out /Spot (CVBS)      | 2 BNC   |
| Audio/ Input / Output       | 16 / 1  |
| Sensor Alarm Input / Output | 4 / 1   |
| <b>* DETAILS</b>            |   |
| Screen/ Display split       | 1, 4, 7, 9, 10, 13, 16  |
| Screen /interface           | Graphic User Interface  |
| Video/Codec                 | H.264   |
| Video/Image quality         | Highest / High / Normal / Low   |
| Video/Recording type        | Schedule / Normal / Event (Motion, Sensor, Videoloss)                             |
| Storage/Internal            | 2 HDDs x 4TB (1 HDD + DVD-RW)   |
| Storage/Option              | Add SATA Board: 3 HDDs or 2 HDDs + DVD-RW   |
| Connectors/ USB / RS-485    | 2 USB ports / PTZ camera, PTZ controller interface                                |
| <b>* FUNCTIONS</b>          |   |
| Camera option               | Color adjustment/Position change / Freeze / 4X digital zoom (live/playback)       |
| Motion/Sensitivity          | 5 levels motion detection   |
| Motion/Area                 | Adjustable GRID (22 x 15)   |
| System/Hidden Camera        | Hidden camera on live monitoring  |
| System/PTZ                  | Various PTZ camera protocol / Preset up to 255 / RS-485                           |
| System/Private Zone         | Blocking the private zone (live / playback)                                       |
| System/Auto Time Sync       | NTP (Network Time Protocol)   |
| System/Firmware Update      | USB   |
| System/S.M.A.R.T.           | Auto detect when HDD's problem  |
| Event/Type                  | Motion / Sensor / Video loss  |
| Event/Action                | Recording, E-Mail, Log, Send message to remote, Buzzer, Pop up, Alarm, PTZ preset |
| Event/Pre/Post Recording    | Up to 60sec / 100sec  |
| Backup/ File format         | DVR format  |
| Backup/ Media               | DVD / USB device / Network  |
| Network/Type                | Static IP / DHCP / DDNS   |
| Network/Base-T              | 10/100/1000 Mbps  |
| Network/Browser             | CMS, Web viewer (Windows/MAC OS), Smart phone support (iPhone, iPad, Android)     |

FRONT VIEW



REAR VIEW



### HDMI VIDEO

HDMI is the de facto standard digital interface for HD and the consumer electronics market. HDMI (High-Definition Multimedia Interface) is the first and only industry-supported, uncompressed, all digital audio/video interface. By delivering crystal-clear, all-digital audio and video via a single cable, HDMI dramatically simplifies cabling and helps provide consumers with the highest quality home theater experience. HDMI provides a interface between any audio/ video source, such as a set-top box, DVD player, or A/V receiver and an audio and/or video monitor, such as a digital television (DTV) over a single cable.

|                                 |  |
|---------------------------------|--|
| <b>* SEARCH /PLAYBACK</b>       |  |
| Speed                           | 5 steps  |
| Quick / Event search            | Real time  |
| Record speed                    | Search by designated time / Search by event                        |
| Section repeat playback         | Playback repeating designated time section only                    |
| Panorama search                 | Searching each frame in a screen simultaneously                    |
| SMART search                    | SMART search   |
| Dual mode function              | Live monitoring during playback                                    |
| <b>* POWER</b>                  |  |
| Operating Temperature           | 0~45°C, 32~113°F   |
| Humidity                        | 5~85%  |
| Power requirement               | DC 12V 5A  |
| <b>* PHYSICAL (WITHOUT HDD)</b> |  |
| Dimensions (W x H x D)          | 360(W) x 390(D) x 70(H) (mm) 14.17(W) x 15.35(D) x 2.7(H) (inches) |
| Weight                          | 3.5 (kg) 7.7 (pounds)  |

COR-BIX16XQL

