

COR-554WD

PINHOLE CAMERA w/ WDR & E-ZOOM FUNCTION

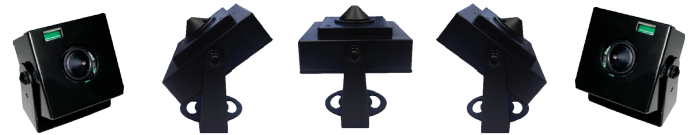


FEATURES

- 1/3" HYPER WIDE DYNAMIC COLOR CAMERA
- (SONY EFFIO-P WDR III)
- MULTI-LANGUAGE OSD CONTROL
- E-ZOOM FUNCTION
- DIGITAL IMAGE STABILIZER (DIS)
- FOG REDUCTION
- MOTION DETECTION FUNCTION
- MOSAIC PRIVACY MASK
- 196 STEP SHUTTERS
- POWERFUL 1024X WDR (60DB)

SPECIFICATIONS

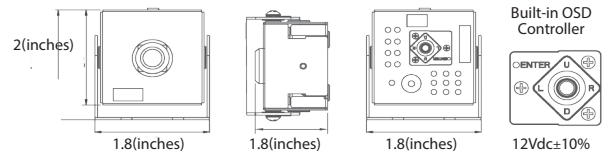
TV System	PAL/NTSC
Image Sensor	1/3" Sony 960H Double-speed (Double-density) CCD
Number of Total Pixels (CCD)	1028 (H) x 596 (V) / 1028 (H) x 508 (V)
Resolution; DSP	Color: 680TVL B/W: 700TVL ; Sony Effio-P (WDR III)
Minimum Illumination	Color: 0.1Lux@F2.0 B/W: 0.05Lux@F2.0 Sense-up: 0.001Lux@F2.0
Wide Dynamic Range	1024X Normal Camera (60dB)
Video Output	1.0Vp-p Composite 75Ω
Signal to Noise Ratio	(S/N) More than 55dB (AGC off)
Gamma Correction	0.45
Mechanical IR Cut Filter (ICR)	NA
IR LED Working Distance	NA
Menu	OSD Control
Title	TITLE (LOCATION)
Synchronizing System	INTERNAL
Day&Night Mode	COLOR / B&W / AUTO / DAY&NIGHT SCHEDULE / EXT
Electronic Shutter	AUTO: 1/50(60)~1/100000 sec. / 4 SCHEDULE SHUTTER (Time&Speed Adjustable) (196 Steps 1/50~1/2000 sec.) MANUAL: 196 Steps, 1/50 ,1/60 ,1/70 ,1/80 ,1/90 , NTSC FL 1/100 ,1/110 , PAL FL 1/120 ,1/130 , ... ,1/1980 ,1/1990 ,1/2000 sec.
Automatic Gain Control	0~200 Levels (Adjustable Level Settings)
White Balance	ATW / AWB / PUSH LOCK / MANUAL / 3200K / 6300K / ANTI CR
WDR ; BLC ; Fog Reduction	WDR / BLC / FOG / OFF
High Light Compensation	ON / OFF / AUTO
Digital Image Stabilizer (DIS)	ON / OFF
Dynamic Noise Reduction	3D / 2D
Sense Up	AUTO (Limit x2~x512) / OFF
Language	ENGLISH / TRADITIONAL CHINESE / SIMPLIFIED CHINESE
Image Setting	SHARPNESS / CONTRAST / SATURATION / HUE / MIRROR
E-Zoom	x1~x256 Pan / Tilt Adjustable
Motion Detection; Privacy	ON / OFF (24x16 Zones Alarm) ; ON / OFF (15 Zones Programmable Quadrangle Mosaic)
Timer	Clock Year/Month/Date Hour/Minute/Second
Camera Control Interface	NA
Automatic IRIS ; Connector	NA
Lens Mount	Built-in Board Lens
Lens Angle of View (H)	Standard: f3.6mm/F2.0/90°
Water Resistance	NA
Max. Breaking Strength	NA
Power Supply Consumption	12Vdc±10% ; 2W
Operation Storage Temp	-10°C~50°C ; -20°C~60°C
Operation Storage Humidity	Maximum: RH80% ; RH90%
Dimensions	48 mm (W) x 53 mm (H) x 46 mm(D) 1.8"(W) x 2"(H) x 1.8"(D)(inches)
Net Weight	120(g) .26 (pounds)
Accessories Option	Pinhole Lens Option: Built-in f 3.7 or 4.3mm



Adjustable Base



ODS Control Settings



Built-in OSD Controller



Optional Board Lens

COR-554WD

