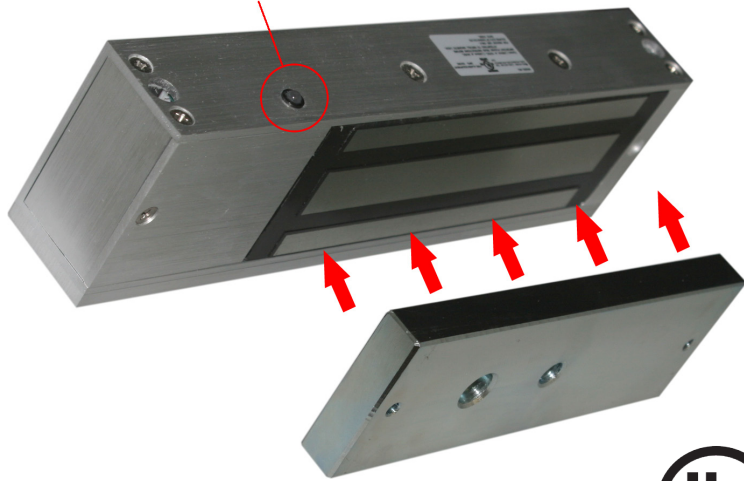


# COR-ACC500

## UL-LISTED 1200LB MAGNETIC LOCK

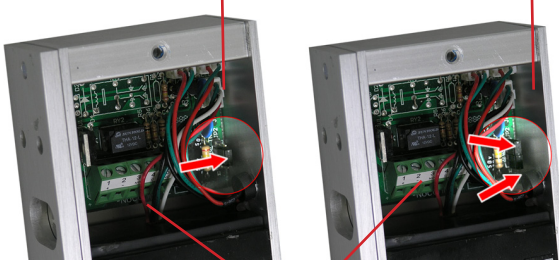
Indicator LED



### Jumper Settings

Jumper Setting for 24VDC Operation

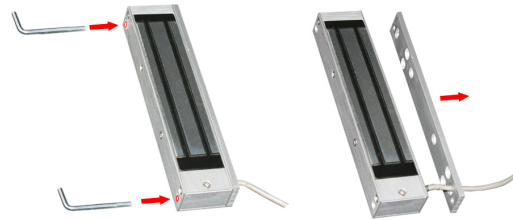
Jumper Setting for 12VDC Operation (Default Setting)



Door Contact Relay

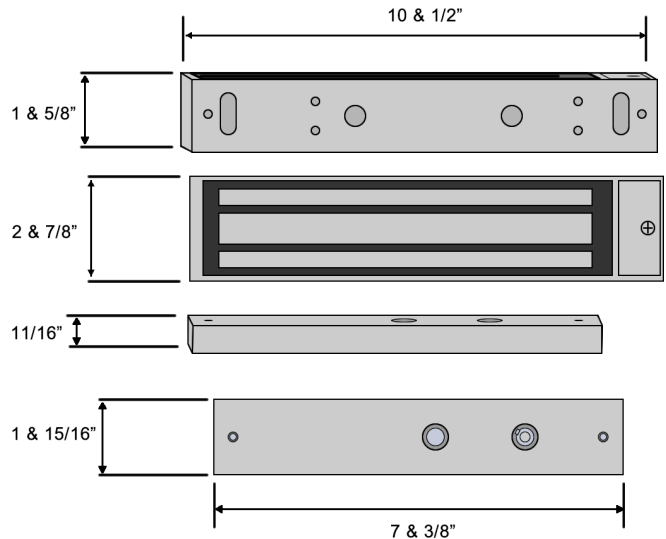
Our COR-ACC500 magnetic lock is widely used in commercial and industrial applications. It is perfect for use on doors and gates that close against a fixed stop. All of the lock components are carefully designed, manufactured, and tested to ensure superior quality.

- APPLY 1200 LBS HOLDING FORCE IN AN INSTANT
- HEAVY DUTY, ALUMINUM ALLOY CONSTRUCTION
- RELEASE WITH NO RESIDUAL MAGNETISM
- DOOR TEMPLATE, INSTRUCTIONS, INSTALLATION HARDWARE KIT INCLUDED



Remove the side plate, if necessary for installation, using the tool provided

### Dimensions



### SPECIFICATIONS

Design	Surface mount
Holding Force	1200lbs
Contact Relay	Built-in, terminal block connector
Protection	Built-in voltage spike suppressor
Indicator	LED
Power	12VDC or 24VDC
Current	360mA/12VDC, 180mA/24VDC
UL Listing	UL # S24385

### RELATED PRODUCTS

Z-Bracket for COR-ACC500 Maglock



COR-ACC12Z

Outdoor Card Reader & Fingerprint Scanner



COR-ACC890BIO

Microwave Motion Sensor



COR-ACC440

Red Push-to-Exit Device



COR-400IL

COR-ACC500

