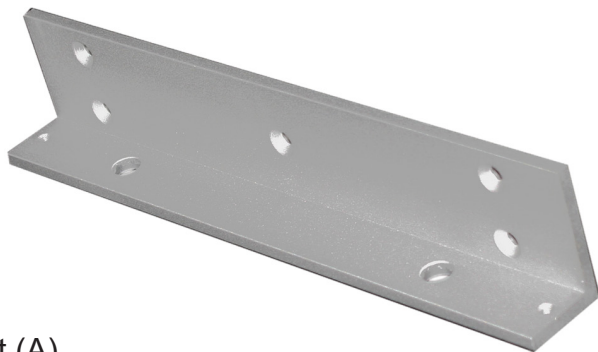


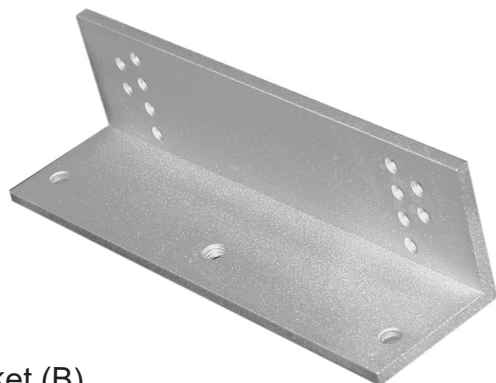
COR-ACC6Z

Z-BRACKET KIT FOR 600LB MAGNETIC LOCK (COR-ACC300)

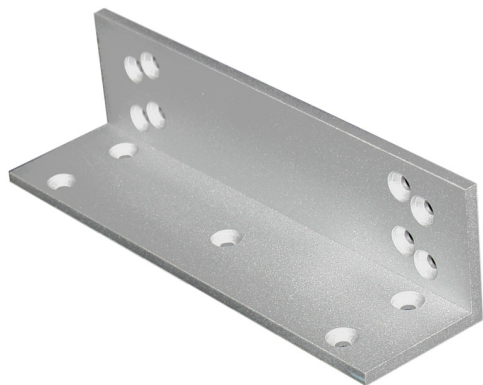
L- bracket



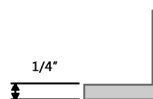
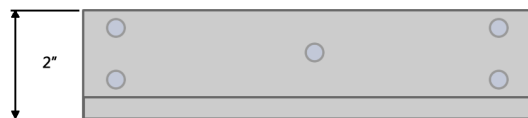
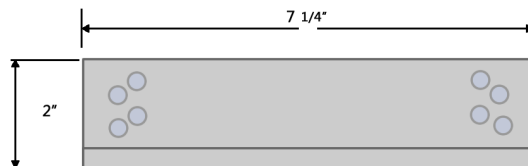
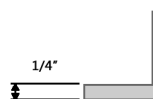
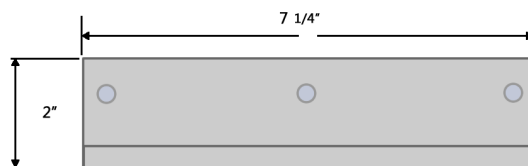
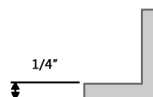
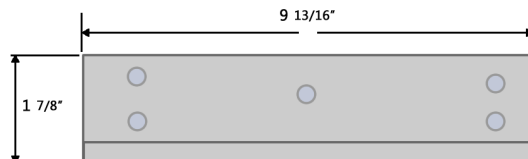
Z- bracket (A)



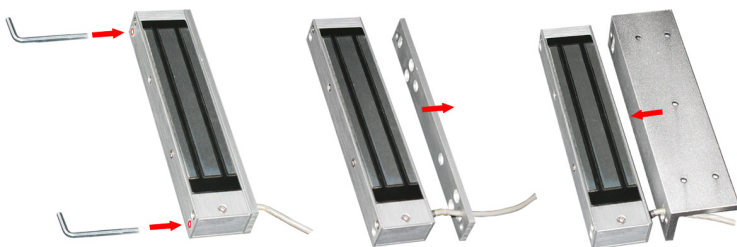
Z- bracket (B)



The COR-ACC6Z package is composed of three brackets that can be used to install the COR-ACC300 maglock to a door frame, an L-bracket and two right angle brackets. The two right angle brackets can be used together in a "Z configuration," used separately or modified as necessary to work with the door. All parts are made from aluminium alloy and have an anodized finish.



To install the L-bracket, remove the side plate from the COR-ACC300 magnetic lock, using the tool provided with the magnetic lock, remove the side plate and then replace the L-bracket.



COR-ACC6Z

